

Front line staff

**Care at home
services**



INDUCTION WORK BOOK

Introduction

To our front line staff,

Welcome to Primecare Health LTD. This handbook will give you guidance on your training and development requirements and opportunities, while you work within your service.

As you are aware there are certain qualifications you must have or work towards to work in social care and timescales that you must achieve these in. Some timescales are set by SSSC and some by our own policies.

This book will provide you with details of training requirements and where to find them as well as ongoing reflective accounts.

Contents

Timeline



PRIMECARE
HEALTH

month

01

Induction completed
Training login details supplied
Working within service

Reflective Account one

02

Trauma Awareness Training
Observations completed

Reflective Account Two



Timeline

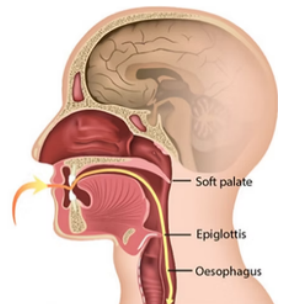


PRIMECARE
HEALTH

month

03

Dysphagia Training Completed
3 Month Probation scheduled



04

Reflective Account Four

05

Reflective Account Five

Timeline



PRIMECARE
HEALTH

06

6 Month Probation scheduled

Reflective Account

01

[Short Blurb about this reflective account](#)

[Click here to begin](#)

Reflective Account

02

[Short Blurb about this reflective account](#)

[Click here to begin](#)

Reflective Account

03

[Short Blurb about this reflective account](#)

[Click here to begin](#)

Reflective Account

04

[Short Blurb about this reflective account](#)

[Click here to begin](#)

Reflective Account

05

[Short Blurb about this reflective account](#)

[Click here to begin](#)



[Click here](#)